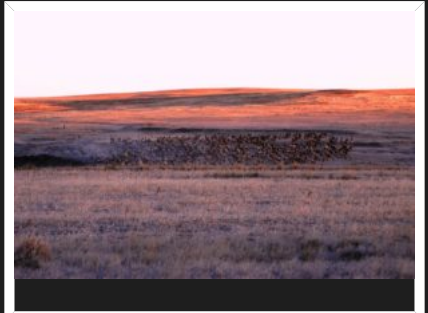
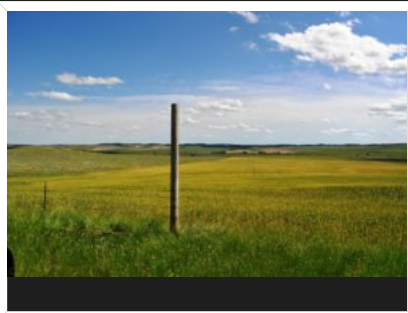




FOR MORE INFORMATION, PLEASE CALL  
(406) 259-2544

# THE WHISTLING BULL RANCH

\$1,500,000.00



# THE WHISTLING BULL RANCH

---

**Acreage:** 1,060

The Whistling Bull Ranch consists of 1,060 deeded acres north of Winnett, MT. Located in the famed 410 hunting district, this property provides prime recreational habitat with grassy draws, spring fed reservoirs and over 400 acres of cultivated ground providing an excellent food source for wildlife.

## **Location**

Whistling Bull Ranch is located 26 miles north of Winnett, Montana which is 90 miles from Billings, Montana's largest city. Fort Peck, which boasts some of the finest fishing in the country, is located only 25 miles to the north. With thousands of acres of BLM and the Charles M. Russell National Refuge lands close by, the options are endless for the avid outdoorsman. With county road access, phone, power, and fiber optics available, your ability to build your cabin and enjoy some of Montana's finest hunting is endless.

## **Recreational Considerations**

The Whistling Bull Ranch consists of 1,060 acres located in the heart of arguably one of Montana's premier elk destinations. Montana is known for having some of the best elk hunting in the world and the Whistling Bull Ranch is no exception. 380" quality bulls are common in the area. Along with a strong elk population, you can find mule deer, whitetail deer, antelope and upland birds on the property on a regular basis.

***Disclaimer notice.***

***Offering is subject to errors, omissions, prior sale, change or withdrawal without notice, and approval of purchase by owner. Information regarding land classifications, acreages, carrying capacities, potential profits, etc., are intended only as general guidelines and have been provided by sources deemed reliable, but whose accuracy we cannot guarantee. Prospective buyers should verify all information to their satisfaction.***